

T-Mobile®
webConnect™



Quick Start Guide

Table of Contents

Overview.....	2
Introducing Your T-Mobile webConnect™ Laptop Stick.....	3
Get Started	6
Installation & Setup	8
Connect to T-Mobile Broadband.....	12
Connect to Wi-Fi	16
Connect to VPN.....	20
Additional Information	22

Overview

This guide provides you with everything you need to get started. If you need additional information on features and services, please select one of these helpful options:

- Refer to your User Guide.
- Visit **www.t-mobile.com**.
- Click **Help > Help** on the T-Mobile Connection Manager screen.
MAC users please visit <http://T-MobileWebConnect.com/Mac>.

Introducing Your T-Mobile webConnect™ Laptop Stick

Congratulations on your purchase of the T-Mobile webConnect™ Laptop Stick with the T-Mobile Connection Manager (also referred to as Connection Manager).

Together, the Laptop Stick and the Connection Manager allow you to:

- Connect to T-Mobile's high-speed 3G and 2G networks
- Connect to Wi-Fi networks, including the T-Mobile HotSpot network
- Browse the Internet
- Connect to corporate networks through VPN
- Send and receive text messages
- View connection types and status
- Create and modify connections and settings
- Manage network settings



Indicator Light

Green, blinking twice every 3s	Your Laptop Stick is powered on
Green, blinking once every 3s	Your Laptop Stick is registered to a GSM/GPRS/EDGE network
Blue, blinking once every 3s	Your Laptop Stick is registered to a 3G network
Green, always on	The GPRS/EDGE connection is set up
Blue, always on	The 3G connection is set up
Off	Your Laptop Stick has been removed from your computer



Get Started

Before You Begin

Before you begin, you will need:

- A T-Mobile webConnect™ Laptop Stick
- A Subscriber Identity Module (SIM) card
- A T-Mobile webConnect Data Plan
- A computer with the minimum requirements (see below for **Requirements**)

Requirements

You will need your Laptop Stick and a computer with the following minimum system requirements:

	Windows XP®	Windows Vista®
Processor	300 MHz	1 GHz
RAM	256 Mb	1 GB
Hard Drive Space	60 Mb	60 Mb
Internet Explorer	IE 5.5	IE 7
OS Service Pack	Service Pack 1 (or later)	Service Pack 0, 1

Activate Service

The exclusive webConnect Data Plan for the laptop stick allows you to connect to the Internet through T-Mobile's Broadband and HotSpot networks.

▪ Using webConnect for Broadband 3G/2G Access

T-Mobile's rapidly expanding 3G network provides faster data transfer rates than 2G (also known as EDGE). If 3G is not available, the laptop stick will automatically try to find T-Mobile's 2G network. The plan also provides global roaming access in many countries where T-Mobile coverage is available and roaming agreements are in place.

▪ Using T-Mobile HotSpot for Wi-Fi Access (Included)

The Connection Manager also allows you to control your connections to home, work, and public Wi-Fi networks. The included T-Mobile HotSpot account provides access to Wi-Fi in numerous locations worldwide. You can access T-Mobile HotSpot at select coffeehouses; Borders Books and Music; FedEx Kinko's Office and Print Centers; Hyatt Hotels and Resorts; Red Roof Inns; airports; select American Airlines Admirals Clubs; Delta Air Lines Crown Rooms; United Airlines Red Carpet Clubs; and US Airways Clubs. For a complete listing of T-Mobile HotSpot locations, at the main Connection Manager screen click **WiFi**, then click the **HotSpots** button.

NOTE: For data services, you may need to wait up to 24 hours for the service to be activated. By activating service, you acknowledge that you have read and agreed to the Terms and Conditions of the Service Agreement.

Installation & Setup

The install process involves the following:

- Insert the SIM into your T-Mobile webConnect™ Laptop Stick
- Install T-Mobile Connection Manager on your computer

Insert SIM

1. Remove the SIM card slot cover.
2. Insert SIM card into the SIM card slot with the golden contacts facing down and the notched corner facing out.
3. Replace the SIM card slot cover.



Insert Memory Card

Your T-Mobile webConnect™ Laptop Stick supports a microSDHC™ memory card, however, a memory card is not included with your Laptop Stick purchase.

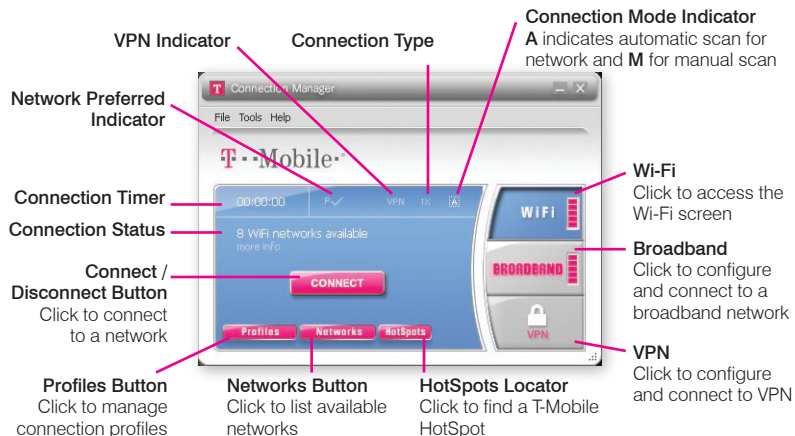
NOTE: Do not remove your memory card while it is in use. Removing the memory card while in use may corrupt the data stored on your memory card and damage the memory card or your Laptop Stick.

1. Slide the memory card into the memory card slot with the golden contacts facing the back side of your Laptop Stick.



Install Connection Manager

Connect your T-Mobile webConnect™ Laptop Stick to the USB port of your computer. The Connection Manager installation begins automatically. Follow the on-screen instructions to complete the installation.



Open the Connection Manager:

- On your computer taskbar, click the **Start** button. Point to **Programs > T-Mobile** and then click **T-Mobile Connection Manager**.
OR
- On your computer desktop, double-click the **T-Mobile Connection Manager** icon.

NOTE: When installing Connection Manager, if the installation does not start automatically, find **AutoRun.exe** on your **Connection Mgr** CD-ROM. Double-click **AutoRun.exe** to launch the installation.

Remove your T-Mobile webConnect™ Laptop Stick from Your Computer

It is important to properly remove your Laptop Stick from your computer to prevent data loss or corruption.

1. Double-click the **Safely Remove Hardware** icon in the system tray on your computer.
2. Select **USB Mass Storage Device** and click **Stop**.
3. Select your Laptop Stick and click **OK**.
4. When you see the prompt, "It is safe to remove the device", remove your Laptop Stick from your computer.

NOTE: Two "USB Mass Storage Device" are related to your Laptop Stick. Be sure to stop both with Safely Remove Hardware before removing your Laptop Stick. Before removing your Laptop Stick, exit the Connection Manager.

Connect to T-Mobile Broadband

Connect to T-Mobile Broadband

You do not need to set a network profile to connect to T-Mobile Broadband. The profile (T-Mobile Broadband) is built in, and you do not need to add a profile or change settings to connect to T-Mobile's network.

Connect to T-Mobile Broadband:

1. Insert your SIM card in your T-Mobile webConnect™ Laptop Stick if you have not done so already.
2. Insert your Laptop Stick in your laptop.
3. Open the Connection Manager and click **BROADBAND**. Your Laptop Stick will then scan the area for available networks.
4. Click **CONNECT**.



Connect to other Networks

To connect to another network, you must first create a profile for that network. You must have a network profile for each network to which you wish to connect.

Create a new network profile:

1. At the main Connection Manager screen, click **BROADBAND**.
2. Click **Profiles**. The Profiles screen opens.
3. At the **Profiles** screen, click **Add**.
4. Click **Broadband** and then click **Add**.
5. Select the network whose profile you would like to add or select **Create Customer Profile** if you want to create a profile for a network that is not listed here. Click **Next**.
6. Click **Next**.
7. In the **IP Settings** screen, configure your settings as needed and click **Next**. Consult with your IT administrator if needed for applicable settings.
8. In the **General** screen, configure the remainder of the settings for your profile and click **Finish**. Consult with your IT administrator if needed for applicable settings.

Connect to other networks:

NOTE: Connecting to other broadband networks may incur roaming charges.

1. At the main **Connection Manager** screen, click **BROADBAND**.
2. Click the **Connect Using** button to display a list of networks.
3. Click the **Connect** button for the desired network.

Send Text Message

When you are connected to broadband, you can send and receive short text messages to another mobile phone or to another Laptop Stick user using the Connection Manager very much like you can do on most wireless phones. The Connection Manager makes it easy by allowing you to send, receive, and manage text messages from a familiar e-mail like messaging client.

Write and send a text message:

1. At the main Connection Manager screen, click **Broadband**.
2. Click the **SMS** button to open the T-Mobile Connection Manager – Text Messaging Service screen.
3. Click **New** to open the new message screen.
4. At the **To** line, type the destination phone number OR click **To** to open the address book to select a contact saved in your address book.
5. Type your message and click **Send**.

Receive a text message:

When you receive a new text message, the Connection Manager displays the following icon on the main screen for Broadband:




NOTE: Separate charges apply to send/receive domestic/international text messages.


Read the message:

1. At the main broadband screen, click **SMS**.
2. Make sure **Inbox** is selected.
3. Double-click the message you want to read OR you can click **Preview** on the toolbar menu to read the message from the Preview pane.

Manage text messages:


The Text Messaging Client provides a number of management functions that let you save and organize your incoming and outgoing messages. They include:

Click  or click **File > Folders > New Folder** to create a new folder in which to store messages.

Click  or click **File > Folders > Delete Folder** to delete a folder you have created (and all the messages it contains).

Click  or click **Edit > Move to Folder** to move the selected message to another folder.

NOTE: Moving a message from the Inbox to another folder will not delete the message. The next time you open the Text Messaging Client, the moved message will re-appear in your Inbox.

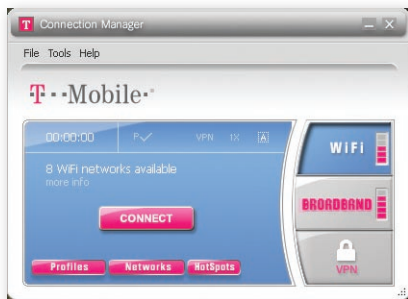
Click  or click **Edit > Copy to Folder** to place a copy of the selected message in another folder.

Connect to Wi-Fi

Connect to a T-Mobile HotSpot

The Connection Manager offers you two different networks for connecting to the Internet from any T-Mobile HotSpot:

- T-Mobile WiFi Network – This network connection is the T-Mobile standard network for Wi-Fi connections.
- T-Mobile's Enhanced WPA – This network connection allows secured connection using the WPA encryption (802.1x) standard.



NOTE: Your Laptop Stick does not have a Wi-Fi radio. Connection Manager uses the Wi-Fi radio in your computer to make Wi-Fi connections.

Connect to a T-Mobile HotSpot:

1. Make sure that you are at a T-Mobile HotSpot location. For HotSpot locations, at the main Connection Manager screen click **WiFi**, then click the **HotSpots** button.
2. Open the Connection Manager.
3. Click **WiFi**. Your Laptop Stick will then scan the area for a T-Mobile HotSpot connection.
4. Click the **CONNECT** button. You will be prompted to type your username and password to your T-Mobile HotSpot account.
5. At the prompt, type the username and password for your T-Mobile HotSpot account. The Connection Manager will log you in to your account. When you have successfully logged in, the T-Mobile HotSpot welcome screen opens.

NOTE: Your T-Mobile HotSpot username is your 10 digit phone number. Your default password is the last 4 digit of your SSN. The default password for corporate customers is the last 4 digits of your tax ID. Your phone number is available through **Tools > Network Info > Broadband** in Connection Manager.

Hint: Connection Manager can save your username and password to speed up connections to the T-Mobile HotSpot network. Click **WiFi** on the main Connection Manager screen, then click **Tools > User Credentials**. Type your username and password and select **store this password for future logins**. Call **877-822-SPOT** for assistance with T-Mobile HotSpot or WiFi.

Connect to other Wi-Fi Networks

Your Connection Manager comes pre-loaded with settings for the T-Mobile HotSpot network, but connecting to other Wi-Fi networks is as easy as connecting to T-Mobile HotSpot.

Connect to other networks:

1. Make sure that you are at a location with Wi-Fi.
2. Click **WiFi**. The Wi-Fi radio in your computer will scan the area for available Wi-Fi networks.
3. Click **Networks** to display a list of available Wi-Fi networks.

NOTE: The Connection Manager will attempt to automatically connect to any pre-defined networks set in your network profile settings or display the last network connection that you made.

NOTE: Before you connect to a Wi-Fi network, you should confirm with its operator if you will need any additional settings to connect. For example, if you are trying to connect to your work Wi-Fi network, you should check with your IT administrator for the correct settings.

4. Click **Connect** for the desired network.

Connect to VPN

Virtual Private Networks (VPNs) are extensions of private networks that you can access over a public network, such as the Internet, without compromising security. For example, a large company may implement a VPN so that employees can connect to the corporate network from remote locations over the Internet. To connect to a VPN, you may need special software or settings on your laptop. Please check with your IT administrator for software or settings needed to connect to VPN.

The Connection Manager currently supports VPN clients from the following vendors:

Microsoft®
Cisco Systems®
Nortel Networks Limited®
Check Point Software Technologies Ltd.®
NetMotion Wireless

You may need to configure VPN settings before connecting to VPN.

Configure a VPN connection:

1. After you have installed the necessary VPN client software and settings, open the Connection Manager.
2. At the main Connection Manager screen, click **Tools > Settings** and then click the **VPN** tab.
3. Adjust settings as desired.
4. Click **OK** to exit.

Set a VPN connection for a T-Mobile profile to launch automatically:

1. At the main Connection Manager screen, click **Profiles**. The **Profiles** screen opens.
2. Select the network profile from the left pane for which you want to automate a VPN connection.
3. Click **Edit**.
4. Click **Auto Launch** in the **VPN** area.
5. Click **OK** to exit.

Additional Information

Data: Data speed is variable and may be impacted by network conditions and traffic. Your data session, plan or service may be slowed, suspended, terminated or restricted if you use your service in a way that interferes with or impacts our network or ability to provide quality service to other users. We may also temporarily reduce data speed for a subset of customers who use a disproportionate amount of bandwidth during a billing cycle. You may not use your plan or device for the prohibited uses listed in your data plan terms. This device requires a specific data plan; if you do not have the right plan, you may not be able to use data services. T-Mobile cannot guarantee the security of any Internet communications. See your data plan terms at www.T-Mobile.com for additional details. If you access the T-Mobile HotSpot network, your use is subject to the T-Mobile HotSpot Terms and Conditions, available at hotspot.t-mobile.com.

Coverage: Service not available everywhere; 3G coverage available in limited markets. Roaming may not be possible or may incur additional charges. For coverage details, see Coverage Maps available at www.T-Mobile.com. See Pricing, Services and Coverage brochures, and **T-Mobile's Terms and Conditions (including arbitration provisions)** at www.T-Mobile.com, for additional rate plan information, charges for features and services, and restrictions and details. T-Mobile and the magenta color are federally registered trademarks of Deutsche Telekom AG. webConnect is a trademark of T-Mobile USA, Inc. ©2009 T-Mobile USA, Inc.

12 MONTH LIMITED WARRANTY

Personal Communications Devices, LLC. (the "Company") warrants to the original retail purchaser of this wireless device, that should this product or any part thereof during normal consumer usage and conditions, be proven defective in material or workmanship that results in product failure within the first twelve (12) month period from the date of purchase, such defect(s) will be repaired or replaced (with new or rebuilt parts) at the Company's option, without charge for parts or labor directly related to the defect(s).

The antenna, keypad, display, rechargeable battery and battery charger, if included, are similarly warranted for twelve (12) months from date of purchase.

This Warranty extends only to consumers who purchase the product in the United States or Canada and it is not transferable or assignable.

This Warranty does not apply to:

- (a) Product subjected to abnormal use or conditions, accident, mishandling, neglect, unauthorized alteration, misuse, improper installation or repair or improper storage;
- (b) Product whose mechanical serial number or electronic serial number has been removed, altered or defaced.
- (c) Damage from exposure to moisture, humidity, excessive temperatures or extreme environmental conditions;
- (d) Damage resulting from connection to, or use of any accessory or other product not approved or authorized by the Company;

- (e) Defects in appearance, cosmetic, decorative or structural items such as framing and non-operative parts;
- (f) Product damaged from external causes such as fire, flooding, dirt, sand, weather conditions, battery leakage, blown fuse, theft or improper usage of any electrical source.

The Company disclaims liability for removal or reinstallation of the product, for geographic coverage, for inadequate signal reception by the antenna or for communications range or operation of the cellular system as a whole.

When sending your wireless device to Personal Communications Devices for repair or service, please note that any personal data or software stored on the device may be inadvertently erased or altered. Therefore, we strongly recommend you make a back up copy of all data and software contained on your device before submitting it for repair or service. This includes all contact lists, downloads (i.e. third-party software applications, ringtones, games and graphics) and any other data added to your device. In addition, if your wireless device utilizes a SIM or Multimedia card, please remove the card before submitting the device and store for later use when your device is returned, Personal Communications Devices is not responsible for and does not guarantee restoration of any third-party software, personal information or memory data contained in, stored on, or integrated with any wireless device, whether under warranty or not, returned to Personal Communications Devices for repair or service.

To obtain repairs or replacement within the terms of this Warranty, the product should be delivered with proof of Warranty coverage (e.g. dated bill of sale), the consumer's return address, daytime phone number and/or fax number and complete description of the problem, transportation prepaid, to the Company at the address shown below or to the place of purchase for repair or replacement processing. In addition, for reference to an authorized Warranty station in your area, you may telephone in the United States (800) 229-1235, and in Canada (800) 465-9672 (in Ontario call 416-695-3060).

THE EXTENT OF THE COMPANY'S LIABILITY UNDER THIS WARRANTY IS LIMITED TO THE REPAIR OR REPLACEMENT PROVIDED ABOVE AND, IN NO EVENT, SHALL THE COMPANY'S LIABILITY EXCEED THE PURCHASE PRICE PAID BY PURCHASER FOR THE PRODUCT.

ANY IMPLIED WARRANTIES, INCLUDING ANY IMPLIED WARRANTY OF MERCHANTABILITY OR FITNESS FOR A PARTICULAR PURPOSE, SHALL BE LIMITED TO THE DURATION OF THIS WRITTEN WARRANTY. ANY ACTION FOR BREACH OF ANY WARRANTY MUST BE BROUGHT WITHIN A PERIOD OF 18 MONTHS FROM DATE OF ORIGINAL PURCHASE. IN NO CASE SHALL THE COMPANY BE LIABLE FOR AN SPECIAL CONSEQUENTIAL OR INCIDENTAL DAMAGES FOR BREACH OF THIS OR ANY OTHER WARRANTY, EXPRESS OR IMPLIED, WHATSOEVER. THE COMPANY SHALL NOT BE LIABLE FOR THE DELAY IN RENDERING SERVICE UNDER THIS WARRANTY OR LOSS OF USE DURING THE TIME THE PRODUCT IS BEING REPAIRED OR REPLACED.

No person or representative is authorized to assume for the Company any liability other than expressed herein in connection with the sale of this product.

Some states or provinces do not allow limitations on how long an implied warranty lasts or the exclusion or limitation of incidental or consequential damage so the above limitation or exclusions may not apply to you. This Warranty gives you specific legal rights, and you may also have other rights, which vary from state to state or province to province.

IN USA: Personal Communications Devices, LLC.
 555 Wireless Blvd.
 Hauppauge, NY 11788
 (800) 229-1235

IN CANADA: PCD Communications Canada Ltd.
 5535 Eglinton Avenue West
 Suite# 234
 Toronto, ON M9C 5K5
 (800) 465-9672